

NAMIBIA

Between dunes
and stars

From April 14 to 24, 2026



Because money can be
recovered, time cannot.



NAMIBIA 2026

From April 14 to 24

Price per person

7,540USD shared room.

Single supplement

880USD.

Maximum group

12 people

Initial meeting point

April 14, 2026, at Windhoek International Airport (Hosea Kutako), the capital of Namibia.

End of trip

April 24, 2026, at Windhoek International Airport (Hosea Kutako), the capital of Namibia.

Arrival and departure airport

Hosea Kutako International Airport, Windhoek, Namibia.

Highlights:

- Travel with one of Namibia's most reputable guides.
- Explore the Sossusvlei area in the Namib Desert.

- Climb some of the world's highest sand dunes in Sossusvlei.

- Photograph the stark beauty of Deadvlei.

- Marvel at Namibia's incredible night sky.

- Explore the historic town of Swakopmund.

- Embark on a marine cruise in the Atlantic Ocean and enjoy close encounters with seals, dolphins, seabirds, and possibly even whales.

- Explore the beautiful area of Sandwich Harbour on an exciting 4x4 dune excursion.

- Walk among prehistoric rock art at Twyfelfontein, a UNESCO World Heritage Site.

- Enjoy guided safaris within the renowned Etosha National Park in a 4x4 vehicle.

- Enhance your well-being with daily yoga sessions.

Itinerary Summary

Day 1

Arrival in Namibia, road transfer to Galton House, Windhoek.

Day 2 & 3

Driving to Dead Valley Lodge,
Sossusvlei (Namib Desert).

Day 4 & 5

Drive to The Delight, Swakopmund.

Day 6 & 7

Drive to Camp Kipwe, Damaraland.

Day 8 & 9

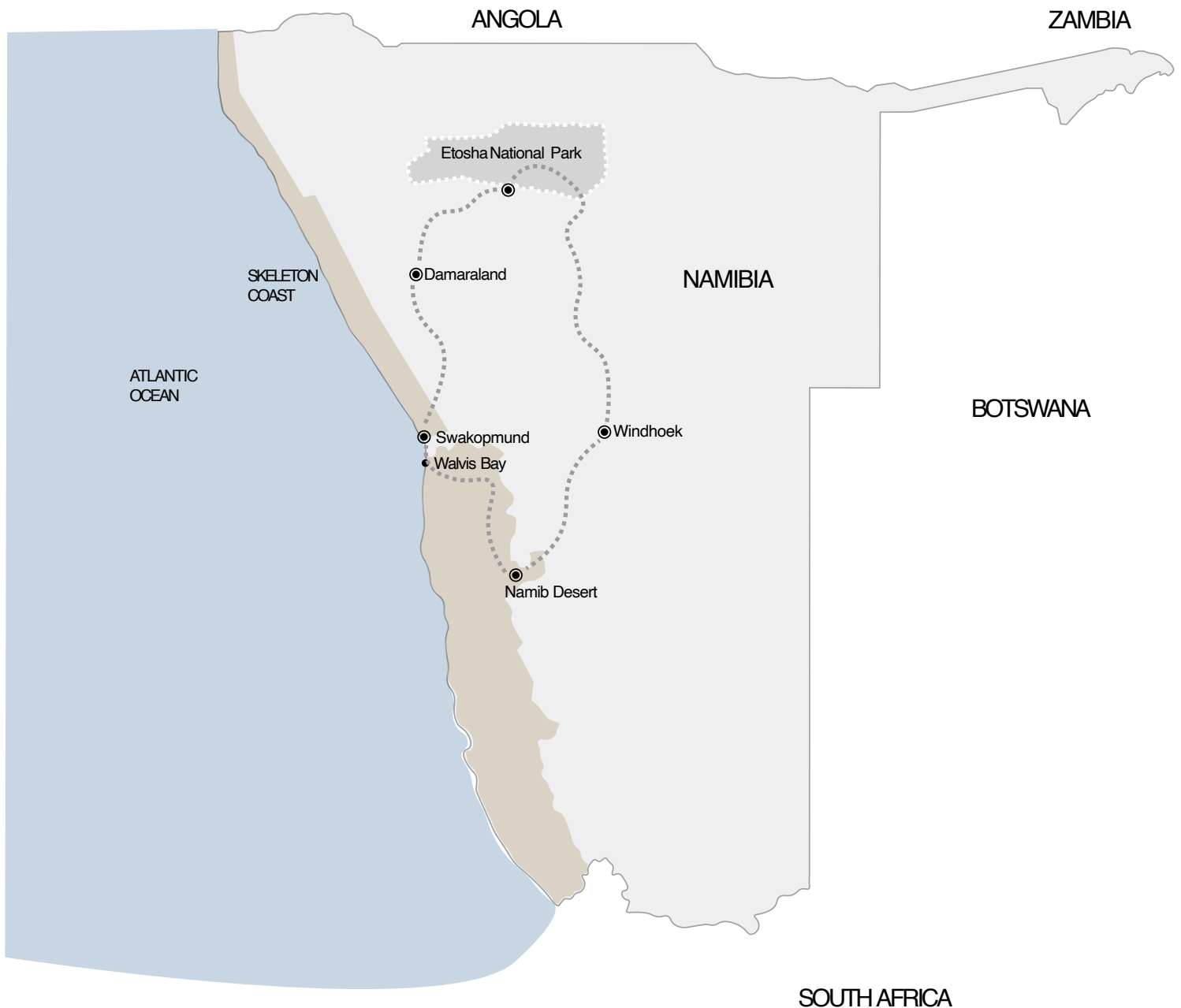
Drive to Etosha National Park.

Day 10

Drive to Galton House, Windhoek.

Day 11

Departure from Windhoek
International Airport.



Day 1 (April 14, 2026)

Detailed itinerary of the trip

Arrival in Windhoek.

After landing at Hosea Kutako International Airport in Windhoek, about 40 km from the city, you will be greeted by a representative who will transfer you to Galton House in Windhoek, where you will spend the night in its designer rooms. The rest of the day is free for you to relax and recover from the flight. In the evening, your guide will meet you at the house to accompany you to dinner and answer any questions you may have about the program. Welcome to Namibia!

Windhoek: Windhoek, the capital of Namibia, is nestled among rolling hills, bordered by the Eros Mountains to the east, the Auas Mountains to the south, and the Khomas Hochland to the west. It is a meeting point between Africa and Europe, the modern and the old. On the main street of the capital, well-preserved German colonial buildings contrast sharply with modern architectural styles, while Herero women in their traditional Victorian dresses mingle with fashionably dressed executives. Located in the center of Namibia, Windhoek is an excellent starting point for an adventure holiday and an ideal base from which to explore the rest of Namibia.

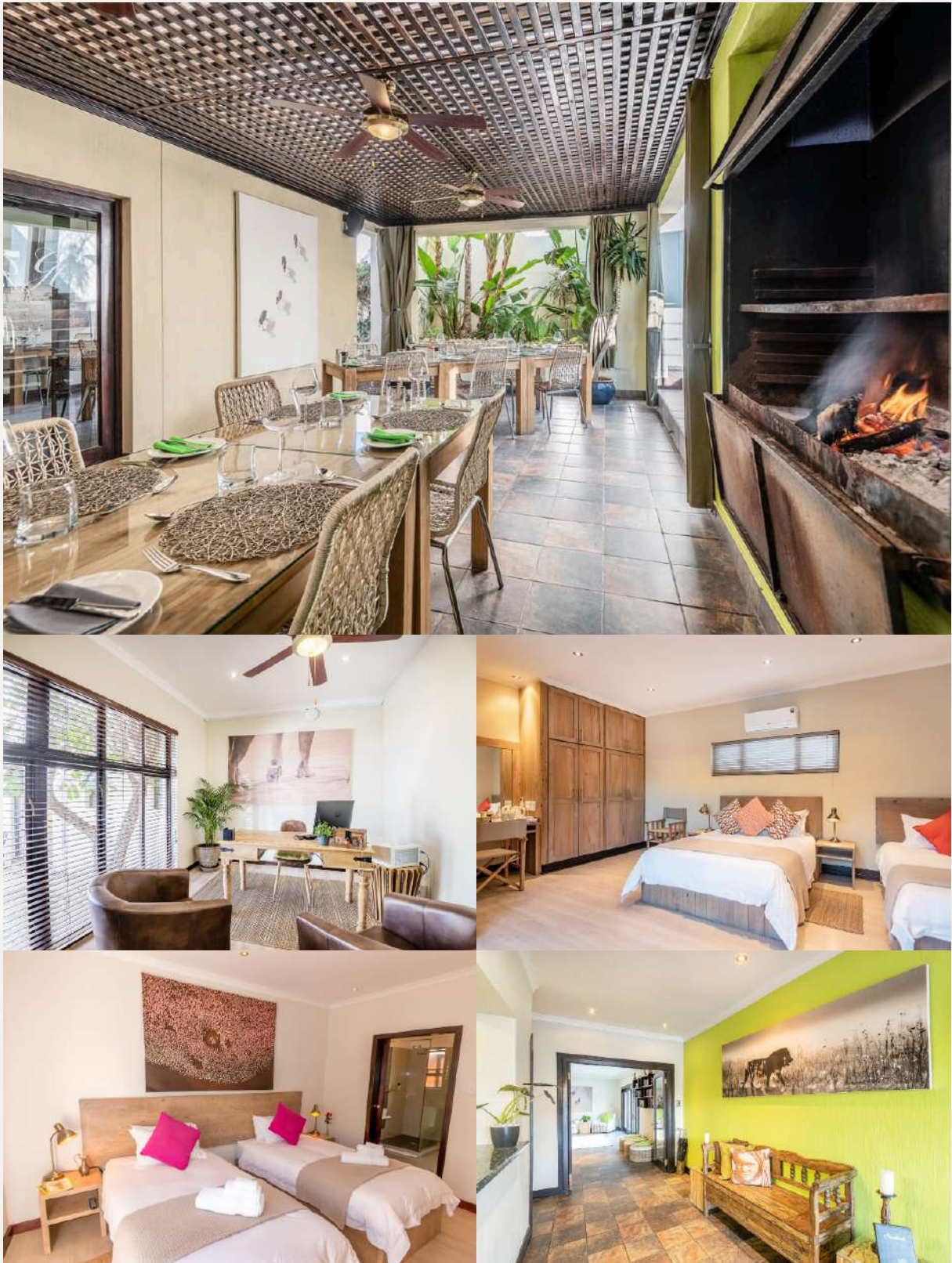
Galton House: Galton House is

named after the famous explorer Sir Francis Galton. It has a relaxed, very welcoming style. Just a ten-minute drive from the city center and located on the edge of the prosperous Eros suburb, north of Windhoek. The nine guest rooms are equipped with internet connection and satellite television, with a coffee/tea area available and other general services. The common areas consist of a large lounge, dining room, pool, and garden. There is also an outdoor dining area by the pool, where freshly prepared and very tasty meals are served.

Overnight at: Galton House.

Includes: Dinner, accommodation, breakfast, and sundowner cocktails at the gin post.

Galton House









Day 2 (April 15, 2026)

Drive from Galton House to the Sossusvlei area/Namib Naukluft National Park.

After an energetic breakfast, your guide will pick you up to depart from Windhoek in the safari vehicles and travel southwest through the picturesque Khomas Hochland highlands before descending the Great Escarpment into the Namib Desert, stopping for a picnic lunch at a scenic spot along the way. You will arrive at Dead Valley Lodge in the mid-afternoon, where you will stay for two nights while exploring the stunning landscapes of the Namib Desert with your guides. Dead Valley Lodge is one of only two accommodations that offer a prime location within the Namib Naukluft National Park.

If there is still time today, your guides will take you to visit the nearby geological attraction, Sesriem Canyon, or explore Elim Dune. However, if you prefer, you can simply relax and enjoy the scenic and tranquil surroundings at the lodge.

Sesriem Canyon: Sesriem Canyon has evolved over centuries of erosion by the Tsauchab River, which has carved a narrow gorge approximately 1.5 km long and 30 m deep into the surrounding conglomerates, exposing the various layers of sedimentation deposited over millions of years. The cool and shaded depths of the canyon allow water pools to

accumulate during the rainy season, which remain for much of the year. These pools were a vital water source for early settlers, who extracted water for their livestock by tying six (SES) lengths of rawhide straps (riems) together, hence the canyon and the surrounding area became known as Sesriem.

Dead Valley Lodge: Opened in July 2019, Dead Valley Lodge is situated within the Namib Naukluft Park, between the park gate at Sesriem and Elim Dune. It is located along the road leading to the famous dunes of Sossusvlei and "Deadvlei." The lodge offers 20 luxury climate-controlled chalets, each with an en-suite bathroom and a panoramic view of the Namib Desert, featuring towering red sand dunes, rugged mountain ranges, and arid desert savannas. The lodge's restaurant serves delicious Namibian-style meals, and guests can also relax at the picturesque bar by the pool while taking in the local desert scenery towards Elim Dune.

Overnight at: Dead Valley Lodge.

Includes: All meals and excursions with your guide.

Dead Valley Lodge













Day 3 (April 16, 2026)

Sossusvlei and Deadvlei

Experience the magical beauty of the Namib Naukluft National Park with your guides. Your day will be filled with photographic opportunities as you rise early this morning for a memorable excursion in the dunes. Since you are already inside the park, you will be able to reach Sossusvlei before others and might even be there in time to see the sunrise, capturing the dunes as the light is soft and the shadows accentuate their towering shapes and curves. This area boasts some of the highest free-standing sand dunes in the world. Your guides will provide information about the formation of the Namib Desert and its myriad of fascinating creatures and plants that have adapted to survive in these harsh environments.

A relaxed picnic brunch in the shade of a tree and a return to Dead Valley Lodge in the early afternoon for a late lunch will culminate an exciting morning of photography. You also cannot miss a visit to the fascinating Sesriem Canyon. The rest of the afternoon is free, with the option to go on another nature drive with your guides later in the day if you wish, to capture stunning landscape photography opportunities at sunset.

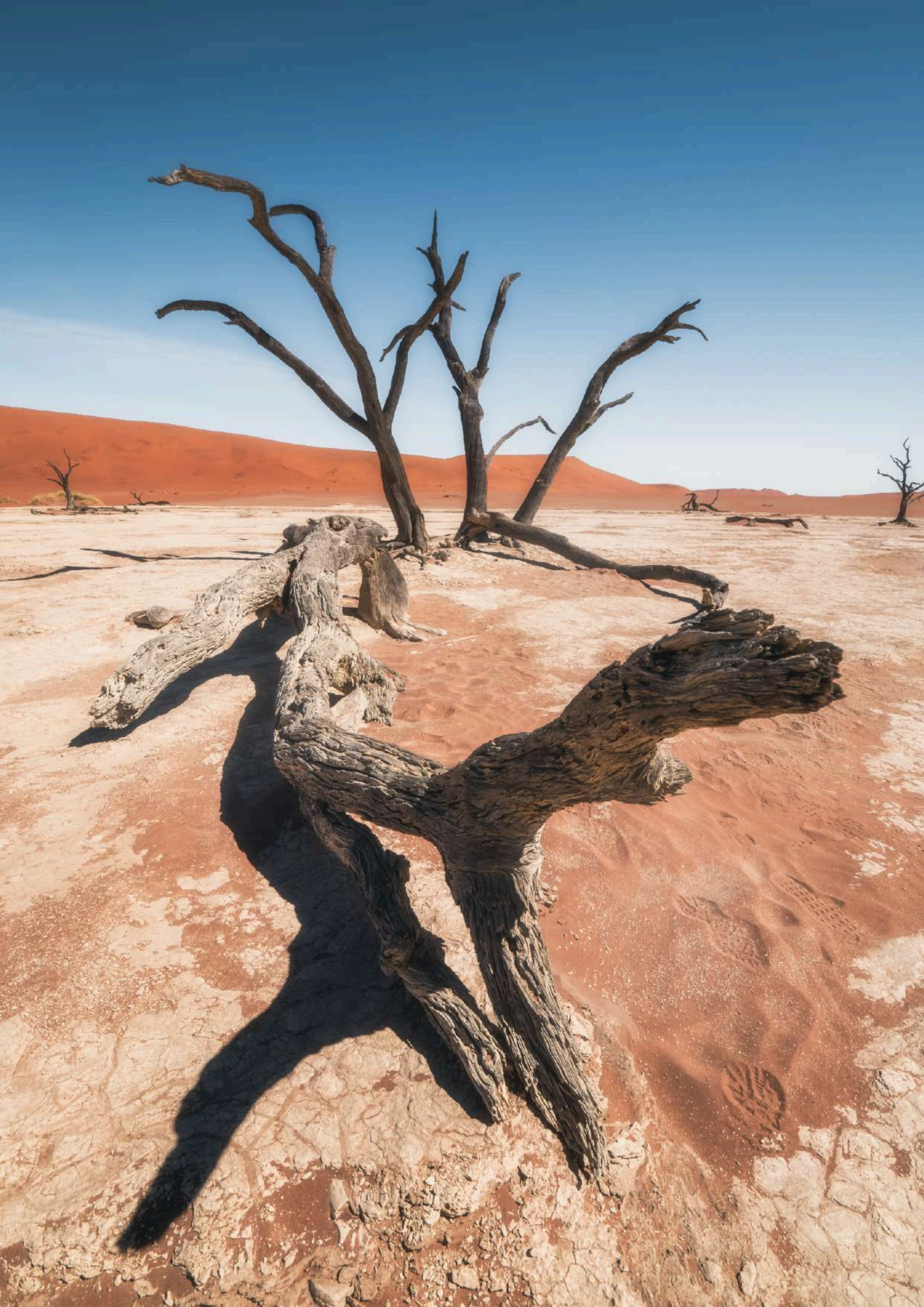
Sossusvlei: Sossusvlei is a clay pan situated amidst towering sand mounds known as star dunes that

reach the height of a 70-story skyscraper and are among the highest dunes on earth.

Overnight at: Dead Valley Lodge.

Includes: All meals and excursions with your guide.





Day 4 (April 17, 2026)

Drive from the Sossusvlei area to Swakopmund

Today's journey will take you northwest through the stunning and ever-changing desert landscapes of the Namib Naukluft National Park, including the impressive Gaub and Kuiseb canyons. You will reach the coast at the port town of Walvis Bay, where you will have the option to visit the lagoon to observe an interesting mix of pelicans, flamingos, and other seabirds before continuing north to Swakopmund. Here, you can enjoy the pleasant seaside location and the fresh coastal air. The rest of the afternoon is free for you to relax at your hotel or explore the town and stroll along the promenade on foot before heading out to dinner with your guides at one of the popular local restaurants.

Swakopmund: Swakopmund resembles a small German coastal resort nestled between the desert and the sea. It offers a charming combination of German colonial architecture along with good hotels, shops, restaurants, museums, craft centers, galleries, and cafes. Swakopmund began as a landing point in 1892 when the Imperial Navy erected beacons at the site. Settlers followed and tried to create a port city by building a concrete pier and then an iron jetty, but both failed. The onset of World War I halted developments, and the city fell

into decline until half a century later when infrastructure improved and a paved road between Windhoek and Swakopmund was opened. This made reaching the previously isolated city quicker and easier, and it thrived again to become Namibia's main tourist destination. Although the sea is often too cold for swimming, there are pleasant beaches, and the cooler climate is refreshing after time spent in the desert.

The Delight Hotel Swakopmund:

Amid the captivating contrasts and old traditions of the town, The Delight is a fresh breeze in the desert. Conveniently located within walking distance of the 'Mole,' this modern and welcoming hotel is the ideal base for your stay. Every effort is made to surprise and delight guests. Each en-suite room is designed with comfort in mind and is equipped with air conditioning, a tea/coffee station, a refrigerator, television, free WiFi, and a safe.

Overnight at: The Delight

Includes: All meals and excursions with your guide.

The Delight







Day 5 (April 18, 2026)

Swakopmund/Walvis Bay

This morning, your guide will take you back to the Walvis Bay lagoon, where you will experience the port city from the waters of the harbor on a catamaran cruise. Glide silently and effortlessly past the enormous ships docked in the harbor while keeping an eye out for playful seals and the possibility of spotting dolphins in the waves.

After your exciting ocean journey, you'll embark on an afternoon excursion to discover the beautiful area of Sandwich Harbour, with many photo stops along the way. Enjoy some drinks and snacks while taking in the stunning scenery from the top of one of the highest dunes in the area before returning to Walvis Bay, where you will meet up with your guides and head back to Swakopmund. Tonight's dinner will be enjoyed at another of the town's popular restaurants.

Walvis Bay: Walvis Bay is Namibia's main port city and also serves as a base for a variety of fishing and recreational activities in the lagoon and at sea. The town is less of a coastal resort than Swakopmund but has a variety of areas of specific interest, especially for bird watchers, including the lagoon itself and the area around the salt pans on the way to Pelican Point. The port was a British protectorate during the years when South West Africa was

a German colony and did not immediately become part of Namibia after independence. In fact, it took almost another five years before that happened.

Dolphin and Seal Cruise:

Departing from the Walvis Bay Yacht Club, you will sail into the beautiful and protected bay, which contains more splendor than meets the eye: a shipwreck, a lighthouse, oyster platforms, different bird species, seals, and an abundance of marine life are just some of the attractions. The boat will approach the oyster platforms where your guide will provide more information about the oysters cultivated in Walvis Bay, delicacies that you will later have the opportunity to taste.

The journey continues to the ever-growing Pelican Point for a closer view of the lighthouse and the resident seal colony. The old supply rails from when the lighthouse was manned by coastguards can still be seen. Around the point, three different types of dolphins can be found: the Heaviside/Benguela dolphins, which are the most notable as they are endemic to the Namibian coast, the dusky dolphins, and the Atlantic bottlenose dolphins. You may also spot the Mola Mola (sunfish) and leatherback turtles. All this can be experienced while you relax comfortably in the lounge, enjoying a glass of sparkling wine and delicious snacks.

Sandwich Harbour: Sandwich Harbour is located approximately 80 km south of Swakopmund, beyond the town of Walvis Bay. It is a remarkably beautiful attraction consisting of a lagoon situated between the Atlantic coast and the high dunes of the Namib Sand Sea. It is a Ramsar wetland site of international importance and is also known as one of the best bird-watching spots on the coast. Sandwich Harbour is best explored with a local guide trained in off-road driving, as the route to the harbor is unpaved and crosses the dunes.

Overnight at: The Delight.

Includes: All meals, scheduled shared morning dolphin and seal cruise, and scheduled shared afternoon excursion to Sandwich Harbour.





Day 6 (April 19, 2026)

From Swakopmund to Damaraland.

This morning you continue your journey north along the coast, making a stop at the haunting remains of the Zeila shipwreck before heading inland towards the picturesque landscape of Damaraland to reach Camp Kipwe. Damaraland is characterized by its displays of colors, magnificent flat-topped mountains, rock formations, and strange-looking vegetation. The current landscape has been shaped by wind erosion, water, and geological forces that have created rolling hills, dunes, gravel plains, and ancient river terraces. It is the variety and solitude of the area, as well as the scenic splendor, that will reward and amaze you, giving you an authentic understanding of the word 'desert.' This afternoon, if time permits, your guide will also arrange a visit to nearby attractions and geological sites such as the prehistoric rock engravings at Twyfelfontein (a UNESCO World Heritage Site); if not, you should have time to do so tomorrow morning.

The Zeila: The Zeila was stranded on August 25, 2008, in the early hours of the morning near "Die Walle," a popular fishing spot about 14 km south of Henties Bay. The fishing vessel was sold as scrap to an Indian company by Hangana Fishing of Walvis Bay and ran aground after breaking free from its towline while en

route to Bombay, India, shortly after departing from Walvis Bay. The rusted hull is now home to hundreds of cormorants and other seabirds, an ominous reminder of why this stretch of beach is known as the Skeleton Coast.

Twyfelfontein: Scattered across a hillside among flat-topped red sandstone mountains, the red sandstone blocks and slabs of Twyfelfontein contain about 2,500 prehistoric engravings depicting fauna, animal tracks, and abstract motifs. It is perhaps the largest and finest collection of petroglyphs in Africa. The engravings show animals such as elephant, giraffe, kudu, lion, rhinoceros, springbok, zebra, and ostrich that used to drink from a spring at the base of the hill. In some cases, tracks were engraved instead of hooves or paws. The abstract motifs mainly feature circles. Stone tools and other artifacts found at Twyfelfontein suggest that hunter-gatherers occupied the site for a period of perhaps 7,000 years. Today, a local guide accompanies visitors to show them the rock art. The engravings are found along two circular routes, one a one-hour ascent and the other 40 minutes longer. Twyfelfontein is one of Namibia's major National Monuments and has recently become a UNESCO World Heritage Site.

Camp Kipwe: Camp Kipwe is ideally located within easy driving distance of the local attractions in the area. The camp is nestled

among a cluster of enormous granite boulders, a stone's throw from the ephemeral Aba Huab riverbed, where desert-adapted elephants often pass by. Each thatched bungalow is comfortable and tastefully decorated in a simple yet stylish manner, with an en-suite outdoor bathroom. At the center of the camp is a large open-air dining area, a bar, a lounge, and a reception with a cozy fireplace nearby to relax in the evenings. A refreshing pool and a sunset viewpoint with beautiful views also complement the camp.

Overnight at: Camp Kipwe.

Includes: All meals and excursions with your guide.

Camp Kipwe







Day 7 (April 20, 2026)

Damaraland

Today is dedicated to exploring this remarkable and fascinating area with your guides. After an early breakfast, you will enjoy a memorable 4x4 excursion along the valleys of the ephemeral Aba Huab river to explore this incredible region and search for wildlife, including the elusive desert-adapted elephants if they are in the area. Damaraland is home to a variety of desert-adapted wildlife and hidden desert treasures. Since elephants are more active in the mornings, you will usually have the best chance of seeing them before returning to the camp for lunch and resting during the heat of the day. Later in the afternoon, you have the option to go on another excursion with your guides, returning to camp in time to relax and enjoy some drinks before dinner while admiring the stunning sunset views.

Damaraland: Damaraland is characterized by its displays of color, magnificent flat-topped mountains, rock formations, and strange-looking vegetation. The current landscape has been shaped by wind erosion, water, and geological forces that have created rolling hills, dunes, gravel plains, and ancient river terraces. It is the variety and solitude of the area, as well as the scenic splendor, that will reward and amaze you, giving you an authentic understanding of the word

'desert.' Damaraland is largely communal land where wildlife conservancies have been developed to encourage local people to protect and value the animals with which they share this region. The desert-adapted wildlife that can be seen includes oryx, steenbok, springbok, ostrich, bat-eared fox, cheetah, black rhino, and the elusive desert-adapted elephant. The ephemeral rivers that traverse the desert plains also create an oasis for other animals that feed on more vegetated habitats, such as kudu and giraffe.

Overnight at: Camp Kipwe

Includes: All meals and excursions with your guide.



Day 9 (April 21, 2026)

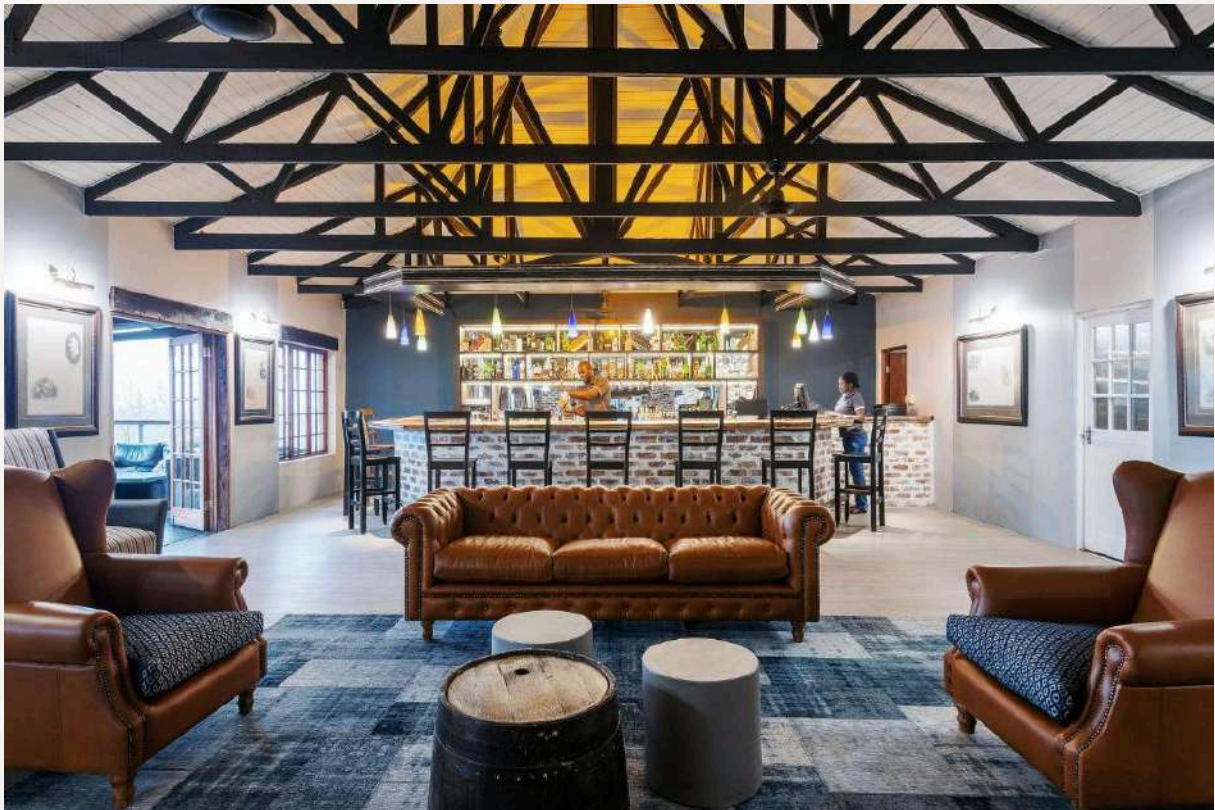
Drive from Damaraland to the Southern Border of Etosha National Park

Today, after a very early breakfast, you embark on your journey north towards Etosha National Park. Arrive at Etosha Safari Lodge in time for a late lunch. After lunch, you will have free time to relax before heading into the park later for wildlife viewing and an introduction to the area.

Etosha Safari Lodge: Etosha Safari Lodge is situated on a hillock overlooking the African bush savannah, approximately 9 km from the southern entrance of Etosha National Park. Each en-suite chalet offers a warm and creative African ambiance and is equipped with air conditioning and mosquito nets. In addition to the restaurant and bar, there is a wooden deck ideal for enjoying sundowner cocktails, perched high above the Mopani bush, and three inviting swimming pools.

Overnight at: Etosha Safari Lodge.

Includes: All meals and excursions with your guide.









Day 9 (April 22, 2026)

Etosha National Park

Today is dedicated to exciting wildlife viewing within Etosha National Park with your guide and from the comfort of your private safari vehicle as you explore the southern and central parts of the park. Lunch will be enjoyed back at the lodge, and the afternoon will be free for you to relax before heading out on another wildlife viewing drive within the park, departing before sunset and returning in time to freshen up before dinner.

Etosha National Park: Etosha National Park covers 22,270 km², of which approximately 5,000 km² are composed of salt pans. The largest of these pans, the Etosha Pan, can be classified as a salt desert in its own right. The Etosha Pan lies in the Owambo Basin, on the northwestern edge of Namibia's Kalahari Desert. Up until three million years ago, it was part of a massive shallow lake that shrank into a complex of salt pans when the main river feeding it, the Kunene, changed course and began to flow to the Atlantic. If the lake existed today, it would be the third largest in the world. Etosha is the largest of the pans, extending over 4,760 km². It currently fills with water only when enough rain falls to the north in Angola, causing floods to flow south along the Cuvelai drainage system. The park consists of grasslands, woodlands, and savannas. Wildlife viewing is

centered around the numerous springs and waterholes where various species can often be seen at the same time. The park is home to around 114 species of mammals and more than 340 species of birds. Wildlife you might see includes elephants, lions, giraffes, wildebeests, elands, kudus, oryx (gemsbok), zebras, rhinos, cheetahs, leopards, hyenas, honey badgers, and warthogs, as well as the endemic black-faced impala.

Overnight at: Etosha Safari Lodge.

Includes: All meals and excursions with your guide.

Day 10 (April 23, 2026)

Drive from Southern Etosha National Park to Windhoek.

After an early breakfast, you begin your journey south through Namibia's central highlands and commercial farmlands back to Windhoek for your final night. This evening, you will go out for a farewell dinner with your guide at one of the popular restaurants in the city or at Galton House, reminiscing about good times and experiences.

Overnight at: Galton House.

Includes: All meals.

Day 11 (April 24, 2025)

Return Day.

This morning can be spent relaxing at your hotel, Galton House, exploring Windhoek, visiting NamCrafts and the Craft Centre, or doing some last-minute souvenir shopping if time permits. A representative will pick you up from your hotel for your transfer to Hosea Kutako International Airport, ensuring you arrive in time to check in for your flight. Upon arrival at the airport, you will be assisted with your luggage and check-in procedures for your flight home.

This officially marks the end of your Safari in Namibia; we hope to welcome you back again very soon!

What is included in the trip:

- Accommodation as mentioned above.
- All meals as indicated above.
- Transportation in luxury air-conditioned safari vehicles.
- Services of registered and experienced safari guides.
- Photography advice from @safaris.juan (Juan Álvarez).
- Optional yoga sessions by a professional instructor (Mavi Mariscal).
- Bottled water on board the safari vehicles.
- All entrance fees and excursions as described in the above itinerary.
- 1 x Scheduled shared seal and dolphin cruise in Swakopmund.
- 1 x Private half-day excursion to Sandwich Harbour.
- Arrival and departure airport transfers.
- Welcome package.

What is excluded:

- All international and regional flights to/from Namibia and related airport taxes.
- Any meals not included in the above itinerary (e.g., lunch on the day of arrival).
- Any entrance fees and excursions

not included in the above itinerary (e.g., scenic helicopter and airplane flights, additional activities in Swakopmund, etc.).

- All premium and imported drinks.
- Laundry (laundry service available at certain lodges at an additional cost).
- Gratuities.
- Items of a personal nature (telephone expenses, souvenirs, medicines, etc.).
- Personal travel insurance (mandatory).
- VISA ENTRY FEES (Not required for Spanish passport holders).
- BANK CHARGES.

Important Information:

Visas/Passports:

- Please ensure that you:

1. Have arranged your entry visa if required.

2. Have a passport that is valid for at least six months beyond your scheduled departure date from Namibia.

3. Have a minimum of 2 consecutive blank pages in your passport. If this is not the case, there is a risk of being denied entry by Immigration Services upon arrival at the airport, assuming your airline has accepted to carry you and risk a fine in the first place.

- Please ensure you have arranged all necessary single or multiple entry visas before your arrival in Southern Africa (unless you have confirmed they are available upon entry). For an updated list of nationalities that are automatically granted tourist visas upon entry into Namibia, please check the Namibia Tourism Board website – (<http://www.namibiatourism.com.na/pages/Visas>).

- For visa application procedures, please visit the Namibia Ministry of Home Affairs website – (<http://www.mfa.gov.na/>).

- It is your responsibility to ensure you meet the necessary visa requirements before entering the

country. We cannot be held responsible for any traveler denied entry due to incorrect documentation.

Health:

- No mandatory vaccinations are required for entry into the country, but please consult your doctor for medical advice. Some parts of Namibia are considered malarial (northern region), so we recommend the use of malaria prophylactics (usually Malarone), especially if visiting during the Namibian summer (December to April), subject to your doctor's advice.

Luggage:

- Luggage is usually restricted to 20 kg (excluding photographic equipment) per person in a soft bag. The weight is generally less important than the volume, as everything is carried with you on the safari.

Land Cruisers Prepared for the Journey:

- Pop-up roofs for better photography and wildlife viewing points.
- Air conditioning.
- Onboard refrigerators/freezers and ample water supply.
- Personal library, including a range of guides, maps, stationery, and checklists.
- 220-volt electrical charging point for charging electronic devices while traveling.
- Guaranteed window seat on each safari.
- VHF radios between vehicles,

allowing groups of multiple vehicles to communicate with each other while "on the road."

- 6 passengers + driver and co-driver per vehicle.

Our guides also travel with their renowned "MAGIC BOXES," ensuring that all on-route catering needs are covered, from field breakfasts and coffee and tea stops to stunning sundowners.



Terms and Conditions:

Confirmed Booking: A booking is only confirmed upon written confirmation and payment of a 30% deposit of the total amount. (Non-refundable).

Final Payments: The final payment must be made at least 120 days before departure. If the company does not receive the final payment by the due date, we reserve the right to cancel all arrangements without notice. Bookings made within 120 days prior to departure will only be processed with full payment. (Non-refundable).

Insurance: It is mandatory for clients to take out comprehensive travel insurance, including cancellation insurance, considering unforeseen circumstances that may arise. It is the guests' responsibility to obtain insurance that covers expenses from the moment the deposit is paid until the conclusion of the booked services. Comprehensive travel and cancellation insurance is required for all our safaris, and guests are expected to cover any costs of cancellation fees, medical care (including medical repatriation if necessary), loss or damage to personal belongings, and any loss of cash they bring with them. Most cancellations will be for reasons that fall within the terms of a guest's travel insurance policy, and their travel insurers should refund the applicable cancellation fees, subject to the terms of their policy. However, if

the coverage is insufficient, guests are expected to cover any shortfall themselves.

Trip Cancellation: In the event that the minimum number of places for the trip (8 places) is not filled, the trip will be canceled, and the total amount paid will be refunded.